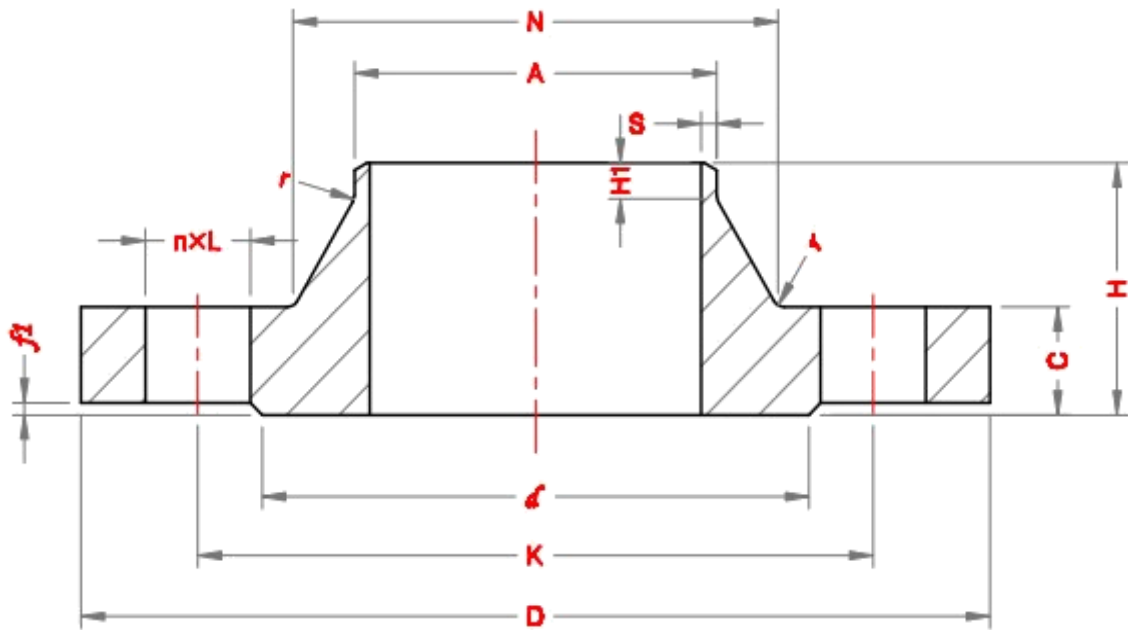


Weld Neck Flanges - EN 1092-1



PN 25

DN	Pipe OD, A		OD, D	Dmtr of Bolt Circle, K	Dmtr of Bolt Holes, L	No. of bolts	Dmtr of Raised Face, d	Height of Raised Face, f1	Flange Thick, C	Length of Flange, H	Neck Diameter, N		Wall thick, S	Length of right end, H1	Radius of Corners, r
	Series I	Series II									Series I	Series II			
10	17.2	14	90	60	14	4	40	2	16	35	28		2.0	6	4
15	21.3	18	95	65	14	4	45	2	16	38	32		2.0	6	4
20	26.9	25	105	75	14	4	58	2	18	40	40		2.3	6	4
25	33.7	32	115	85	14	4	68	2	18	40	46		2.6	6	4
32	42.4	38	140	100	18	4	78	2	18	42	56		2.6	6	6
40	48.3	45	150	110	18	4	88	3	18	45	64		2.6	7	6
50	60.3	57	165	125	18	4	102	3	20	48	75		2.9	8	6
65	76.1	79	185	145	18	8	122	3	22	52	90		2.9	10	6
80	88.9	89	200	160	18	8	138	3	24	58	105		3.2	12	8
100	114.3	108	235	190	22	8	162	3	24	65	134		3.6	12	8
125	139.7	133	270	220	26	8	188	3	26	68	162		4.0	12	8
150	168.3	159	300	250	26	8	218	3	28	75	192		4.5	12	10
200	219.1	219	360	310	26	12	278	3	30	80	244		6.3	16	10
250	273	273	425	370	30	12	335	3	32	88	298		7.1	18	12
300	323.9	325	485	430	30	16	395	4	34	92	352		8.0	18	12
350	355.6	377	555	490	33	16	450	4	38	100	398	406	8.0	20	12
400	406.4	426	620	550	36	16	505	4	40	110	452	464	8.8	20	12
450	457	480	670	600	36	20	555	4	46	110	500	514	8.8	20	12
500	508	530	730	660	36	20	615	4	48	125	558	570	10.0	20	12
600	610	630	845	770	39	20	720	5	48	125	660	670	11.0	20	12
700	711	720	960	875	42	24	820	5	50	129	760	766	14.2	20	12
800	813	820	1085	990	48	24	930	5	53	138	864	874	16.0	22	12
900	914	920	1185	1090	48	28	1030	5	57	148	968	974	17.5	24	12
1000	1016	1020	1320	1210	56	28	1140	5	63	160	1070	1074	20.0	24	16