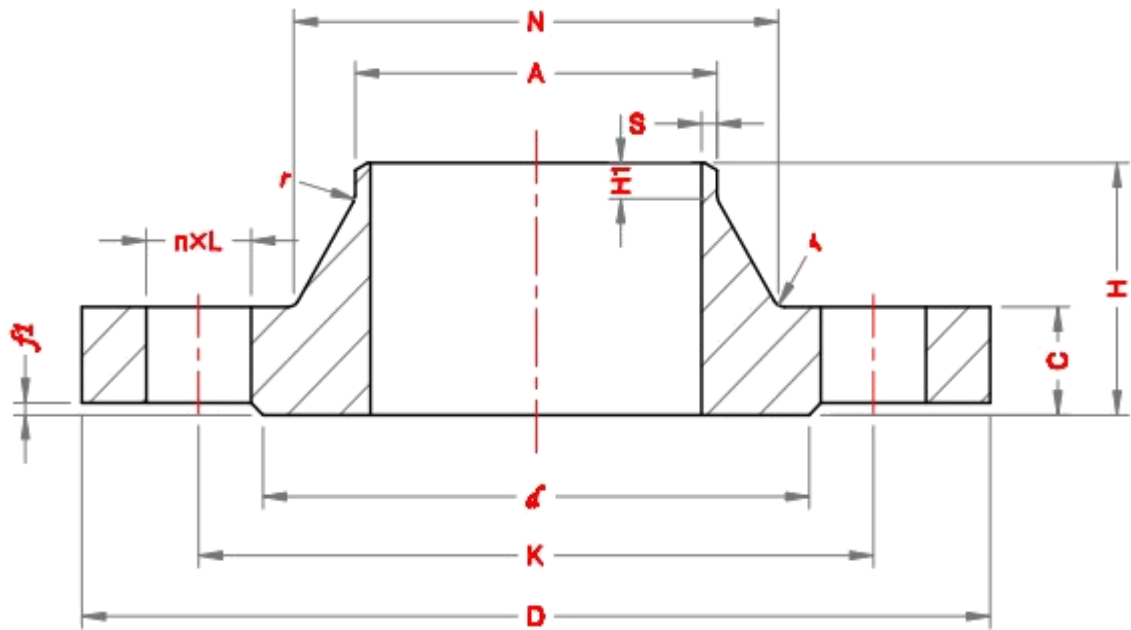


Weld Neck Flanges - EN 1092-1



PN 16

DN	Pipe OD, A		OD, D	Dmtr of Bolt Circle, K	Dmtr of Bolt Holes, L	No. of bolts	Dmtr of Raised Face, d	Height of Raised Face, f1	Flange Thick, C	Length of Flange, H	Neck Diameter, N		Wall thick, S	Length of right end, H1	Radius of Corners, r
	Series I	Series II									Series I	Series II			
10	17.2	14	90	60	14	4	40	2	16	35	28		2.0	6	4
15	21.3	18	95	65	14	4	45	2	16	38	32		2.0	6	4
20	26.9	25	105	75	14	4	58	2	18	40	40		2.3	6	4
25	33.7	32	115	85	14	4	68	2	18	40	46		2.6	6	4
32	42.4	38	140	100	18	4	78	2	18	42	56		2.6	6	6
40	48.3	45	150	110	18	4	88	3	18	45	64		2.6	7	6
50	60.3	57	165	125	18	4	102	3	18	45	74		2.9	8	6
65	76.1	79	185	145	18	8	122	3	18	45	92		2.9	10	6
80	88.9	89	200	160	18	8	138	3	20	50	105		3.2	10	6
100	114.3	108	220	180	18	8	158	3	20	52	131		3.6	12	8
125	139.7	133	250	210	18	8	188	3	22	55	156		4.0	12	8
150	168.3	159	285	240	22	8	212	3	22	55	184		4.5	12	10
200	219.1	219	340	295	22	12	268	3	24	62	235		6.3	16	10
250	273	273	405	355	26	12	320	3	26	70	292		6.3	16	12
300	323.9	325	460	410	26	12	378	4	28	78	344		7.1	16	12
350	355.6	377	520	470	26	16	438	4	30	82	390	400	8.0	16	12
400	406.4	426	580	525	30	16	490	4	32	85	445	450	8.0	16	12
450	457	480	640	585	30	20	550	4	34	83	490	506	8.0	16	12
500	508	530	715	650	33	20	610	4	36	84	548	559	8.0	16	12
600	610	630	840	770	36	20	725	5	40	88	670	670	10.0	18	12
700	711	720	910	840	36	24	795	5	40	104	755	755	10.0	18	12
800	813	820	1025	950	39	24	900	5	62	108	855	855	12.5	20	12
900	914	920	1125	1050	39	28	1000	5	64	118	955	958	12.5	20	12
1000	1016	1020	1255	1170	42	28	1115	5	68	137	1058	1060	12.5	22	16
1200	1219	1220	1485	1390	48	32	1330	5	78	160	1262		14.2	30	16
1400	1422	1420	1685	1590	48	36	1530	5	84	177	1465		16.0	30	16
1600	1626	1620	1930	1820	56	40	1750	5	102	204	1668		17.5	35	16
1800	1829	1820	2130	2020	56	44	1950	5	110	218	1870		20.0	35	16
2000	2032	2020	2345	2230	62	48	2150	5	124	238	2072		22.0	40	16